


# AWN CyberSOC™ Service

## Industry's Most Fierce SOC-as-a-Service

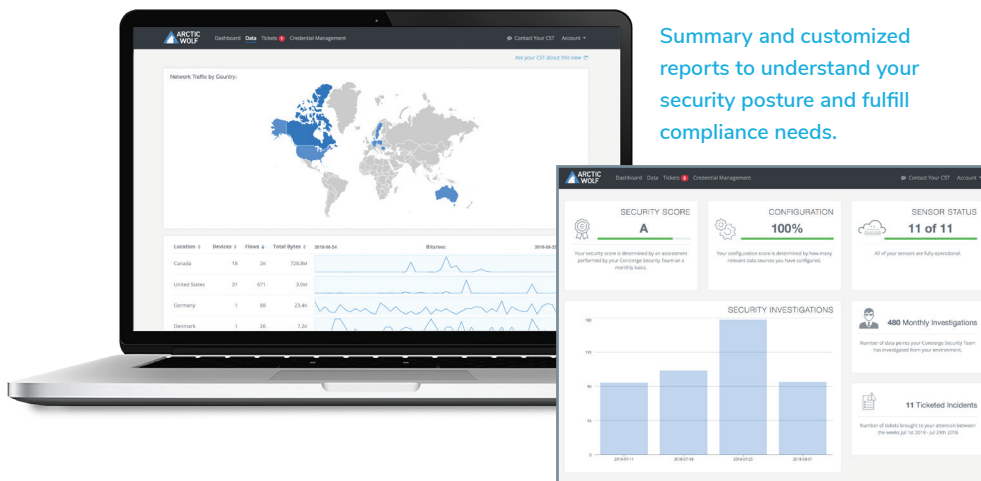
A Security Operation Center (SOC) is the most essential element of modern security. But SOC's are expensive, complicated, and far beyond the reach of most small to midsize enterprises. So, many take the easy route and invest in products, but investment in new security products is no guarantee of security.

AWN CyberSOC differs from traditional managed security services. It is a dynamic combination of world-class Concierge Security™ team (CST), advanced machine learning, and comprehensive, up-to-the-minute threat intelligence. Your CST conducts both routine and non-routine tasks to protect you from known and emerging threats.

## AWN CyberSOC Service Capabilities

 <b>Dedicated Security Expert</b>	 <b>Managed Detection and Response</b>	 <b>SIEM Replacement</b>	 <b>Regulatory Compliance</b>
 <b>Behavioral Analytics</b>	 <b>Real-time Alerting</b>	 <b>Log Analysis with Machine Learning</b>	 <b>Vulnerability Scans</b>

## AWN Customer Portal — Tactical and Strategic Insights



Summary and customized reports to understand your security posture and fulfill compliance needs.

### Concierge Security™ Team

- Customer-dedicated primary point of contact
- Actionable remediation recommendations

### Managed Detection and Response

- Machine learning with adaptive tuning for efficiency and scale
- Proactive hunting and remote forensic analysis

### Security Incident and Crisis Support

- Prioritize security incidents with actionable intelligence
- Required steps for response and remediation
- Comprehensive log collection and retention
- No query languages to learn

### Cloud Monitoring

- 360-degree visibility across customer's on-premises and cloud resources
  - Public cloud infrastructure
  - SaaS applications
  - Security services

### Compliance

- Monitors user behavior and manages security incidents
- Reduces time and costs of audit preparation

### Simple, Predictable Pricing

- Fixed recurring price
- Unlimited data collection

# The Arctic Wolf Difference

## Concierge Security™ Team

The Concierge Security Team (CST) is your single point of contact for your Arctic Wolf SOC-as-a-Service. Your CST serves as your trusted security advisor and an extension of your internal team.

- Conducts daily triage and forensics
- Customizes service to your needs
- Provides actionable remediation recommendations

## Customized Rule Engine (CRuE)

CRuE provides unlimited flexibility to tailor our services to the specific needs of every customer. It allows the Concierge Security team to apply your exact security and operational policies and update them as needed to align expeditiously with your changing business needs.

- Unlimited security policy customization
- Unlimited rules granularity or generalization
- Unlimited situational rules customization

## Hybrid AI

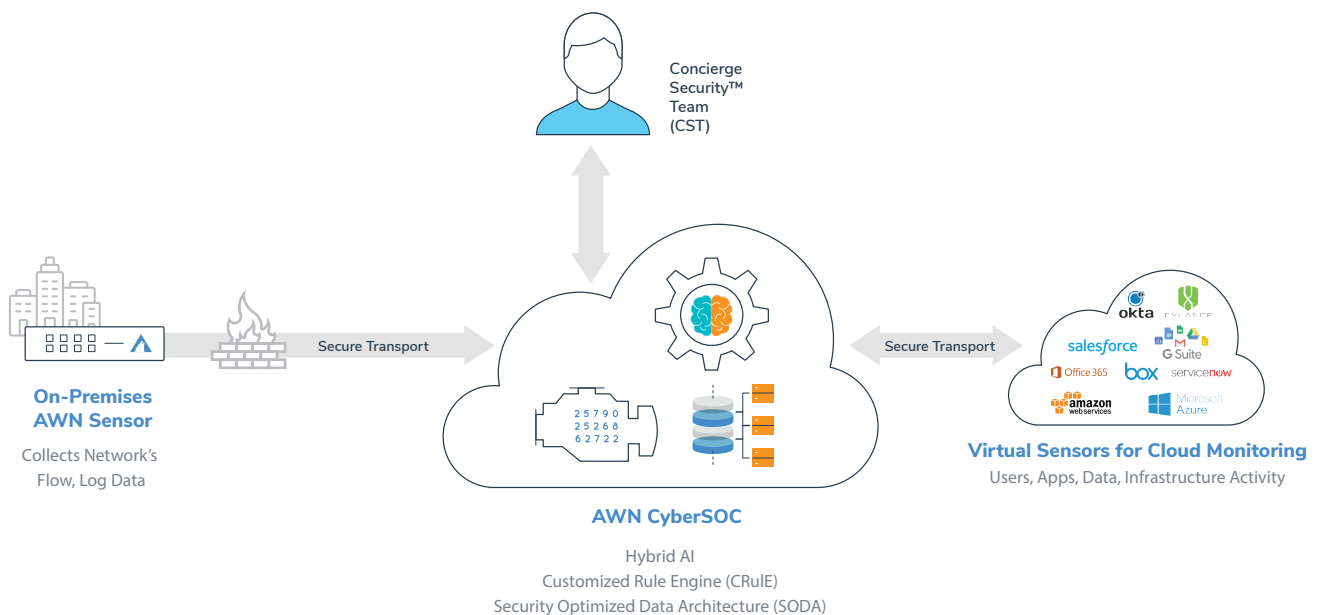
Hybrid AI demonstrably identifies attacks, reduces false positives, and speeds up the time between detection and response. It augments a security team's expertise with the efficiency and productivity of artificial intelligence.

- 10X better threat detection
- Human intelligence and intuition
- Machine scale and efficiency

## Security Optimized Data Architecture (SODA)

SODA unifies the ingestion, parsing, and analysis of network traffic and log data. It provides the foundation for the security analytics that give our security engineers deep pervasive visibility into your security posture.

- On-demand access to the relevant security data for incident investigation
- Instrumented for cybersecurity data science
- Immediately operational with zero setup time



©2018 Arctic Wolf Networks, Inc. All rights reserved. Arctic Wolf Networks, AWN and the Arctic Wolf Networks logo are trademarks of Arctic Wolf Networks, Inc. in the United States and/or other jurisdictions. Other names used in this document are for identification purposes only and may be trademarks of their respective owners.



SOC2 Type II Certified

### Contact us

arcticwolf.com  
1.888.272.8429  
ask@arcticwolf.com

